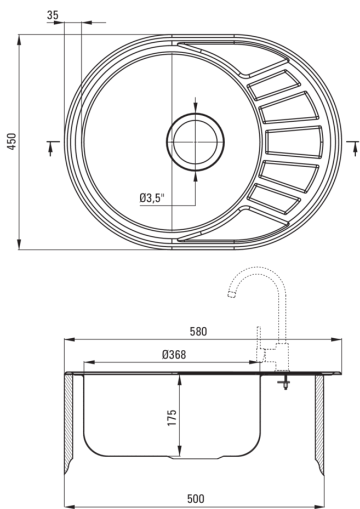


STOCK

Steel sink with tap, 1-bowl with drainer



Product code: ZSTA011C
EAN: 5908212068786
Color: satin
Warranty [years]: 2



Sink

| | |
|----------------------------|----------------|
| Finish | satin |
| Surface type | satin, brushed |
| Material | steel 201 |
| Installation method | inset |
| Number of bowls | 1 |
| Minimum cabinet width [mm] | 500 |
| Width [mm] | 450 |
| Length [mm] | 580 |
| Height [mm] | 175 |
| Bowl depth [mm] | 175 |
| Cut-out length [mm] | 560 |
| Cut-out width [mm] | 430 |
| Reversible | Yes |
| Equipped with accessories | Yes |
| Number of holes | 0 |
| Additional features | mixer included |

Sink waste kit

| | |
|---|--------|
| Finish | steel |
| Plug type | manual |
| Possibility to connect a dishwasher/ washing machine | Yes |

Mixer

| | |
|---------------------|----------------------|
| Finish | chrome |
| Mixer type | single-handle, mixer |
| Installation method | standing |
| Acoustic group [db] | I (x ≤ 20) |

Mixer cartridge

| | |
|------------------------|-------|
| Ceramic cartridge size | 40 mm |
|------------------------|-------|

Spout

| | |
|------------------------|--------|
| Spout type | swivel |
| Mixer spout range [mm] | 216 |

Aerator

| | |
|--------------|-----------|
| Aerator type | honeycomb |
| Aerator size | M24 |

Connecting hose

| | |
|---------------------|------|
| Length [mm] | 450 |
| Installation thread | 3/8" |
| Connection thread | M10 |