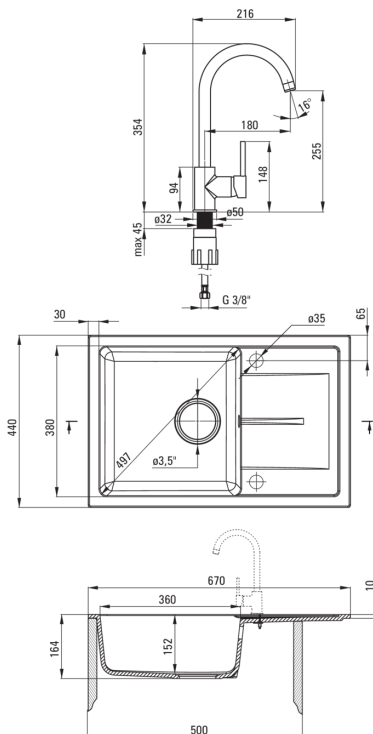


Granite sink with tap, 1-bowl
with drainer



Warranty [years]: 18



Finish	sand
Surface type	matte
Material	granite
Installation method	inset
Number of bowls	1
Minimum cabinet width [mm]	500
Width [mm]	440
Length [mm]	670
Height [mm]	164
Bowl depth [mm]	152
Cut-out length [mm]	650
Cut-out width [mm]	422
Reversible	Yes
Equipped with accessories	Yes
Number of holes	2
Number of pre-drilled holes	0
Hydrophobicity	Yes

Finish	steel
Plug type	manual
Low siphon/ space saver	Yes
Possibility to connect a dishwasher/ washing machine	Yes

Finish	sand
Mixer type	single-handle, mixer
Installation method	standing
Flow class [l/min]	Z - 4-9 l/min
Acoustic group [db]	I ($x \leq 20$)

Ceramic cartridge size	35 mm
------------------------	-------

Spout type	swivel
Mixer spout range [mm]	180

Aerator type	honeycomb
Aerator size	M22

Length [mm]	450
Installation thread	3/8"
Connection thread	M10