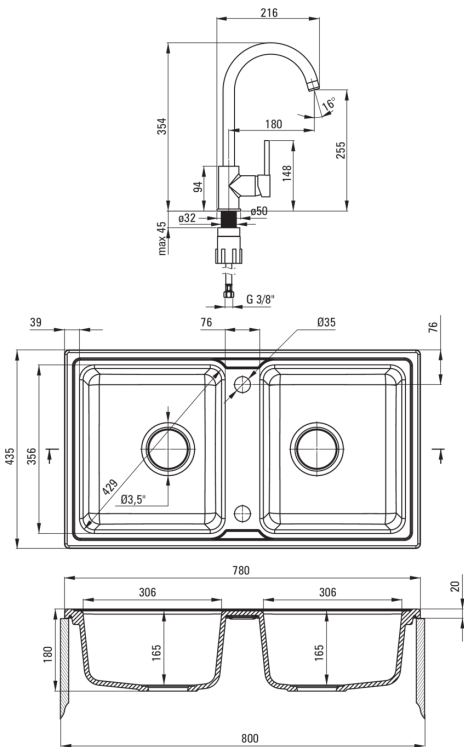


ZORBA

Granite sink with tap, 2-bowl



Product code: ZQZA7203  
EAN: 5908212058800  
Color: sand  
Warranty [years]: 18



Sink

|                             |         |
|-----------------------------|---------|
| Finish                      | sand    |
| Surface type                | matte   |
| Material                    | granite |
| Installation method         | inset   |
| Number of bowls             | 2       |
| Minimum cabinet width [mm]  | 800     |
| Width [mm]                  | 435     |
| Length [mm]                 | 780     |
| Height [mm]                 | 180     |
| Bowl depth [mm]             | 165     |
| 2nd bowl depth [mm]         | 165     |
| Cut-out length [mm]         | 760     |
| Cut-out width [mm]          | 415     |
| Equipped with accessories   | Yes     |
| Number of holes             | 2       |
| Number of pre-drilled holes | 0       |
| Hydrophobicity              | Yes     |

Sink waste kit

|  |           |
|--|-----------|
| Finish   | steel     |
| Plug type  | automatic |
| Low siphon/ space saver                              | Yes       |
| Possibility to connect a dishwasher/ washing machine | Yes       |

Mixer

|                     |                      |
|---------------------|----------------------|
| Finish              | sand                 |
| Mixer type          | single-handle, mixer |
| Installation method | standing             |
| Flow class [l/min]  | Z - 4-9 l/min        |
| Acoustic group [db] | I (x ≤ 20)           |

Mixer cartridge

|                        |       |
|------------------------|-------|
| Ceramic cartridge size | 35 mm |
|------------------------|-------|

Spout

|                        |        |
|------------------------|--------|
| Spout type             | swivel |
| Mixer spout range [mm] | 180    |

Aerator

|              |           |
|--------------|-----------|
| Aerator type | honeycomb |
| Aerator size | M22       |

Connecting hose

|                     |      |
|---------------------|------|
| Length [mm]         | 450  |
| Installation thread | 3/8" |
| Connection thread   | M10  |