

Ceramic sink, 1-bowl with
drainer



Warranty [years]: 2



Sink

Finish	cappuccino
Surface type	shine
Material	ceramic
Installation method	inset
Number of bowls	1
Minimum cabinet width [mm]	600
Width [mm]	510
Length [mm]	1010
Height [mm]	220
Bowl depth [mm]	185
Cut-out length [mm]	990
Cut-out width [mm]	490
Equipped with accessories	Yes
Number of holes	2
Number of pre-drilled holes	0

Sink waste kit

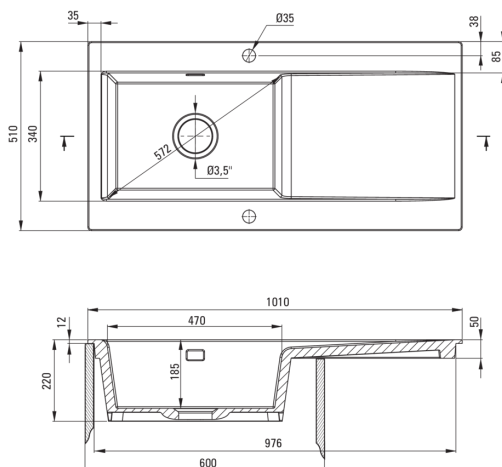
Finish	steel
Plug type	automatic
Low siphon/ space saver	Yes
Possibility to connect a dishwasher/ washing machine	Yes

Features:

- **ATTENTION!** Before cutting a hole in the tabletop to install the sink, take into account the actual dimensions of the model you purchased.
- Hard and durable ceramics does not lose its properties with long use
- The sink is equipped with fittings with a connection to the dishwasher
- Accessories with automatic shut-off of the drain
- Dedicated cleaning agent, safe for cleaned surfaces
- Space-saving siphon which facilitates e.g. sorting waste
- The exceptionally spacious and deep bowl will even accommodate trays taken out of the oven

ATTENTION! Before cutting a hole in the tabletop to install the sink, take into account the actual dimensions of the model you purchased.

ATTENTION! Before cutting a hole in the tabletop to install the sink, take into account the actual dimensions of the model you purchased.



Tolerancja wymiarów $\pm 5\%$ dla wartości do 200 mm i $\pm 3\%$ dla wartości powyżej 200 mm
All dimensions in mm tolerance $\pm 5\%$ for below 200 mm and $\pm 3\%$ for above 200 mm